



**2019**  
**MPSEOC**  
**ANNUAL REPORT**





# TABLE *of* CONTENTS

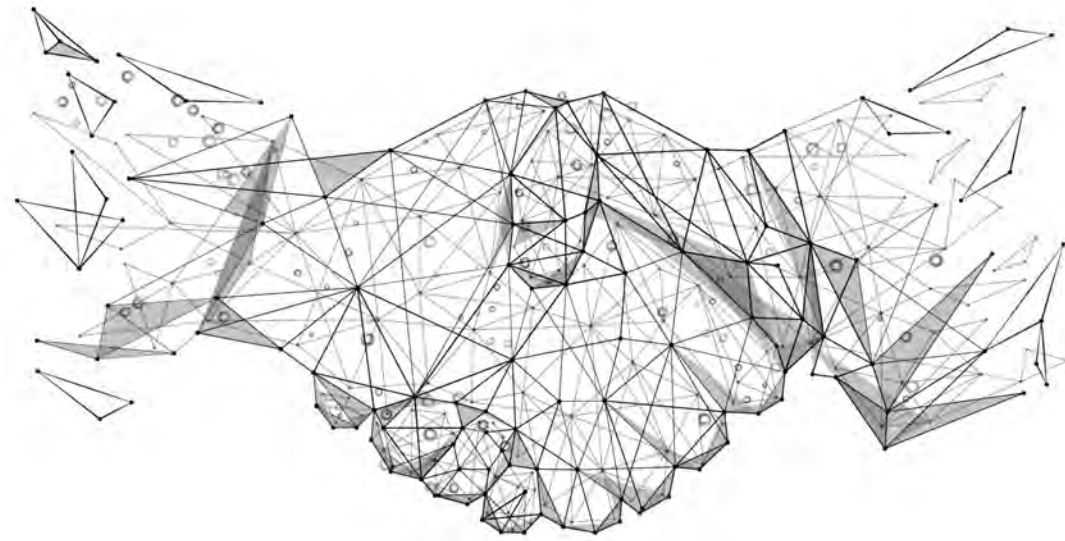


## "CELEBRATING OVER 30 YEARS OF SERVICE"

| [WWW.MONTANACOLLEGES.COM](http://WWW.MONTANACOLLEGES.COM) | [WWW.MPSEOC.ORG](http://WWW.MPSEOC.ORG) | [WWW.MONTANACOLLEGEFAIRS.COM](http://WWW.MONTANACOLLEGEFAIRS.COM) |  
| [WWW.MONTANATRIBALCOLLEGES.ORG](http://WWW.MONTANATRIBALCOLLEGES.ORG) |  
| [WWW.SUPPORTMONTANASTUDENTS.ORG](http://WWW.SUPPORTMONTANASTUDENTS.ORG) |

- \* MESSAGE FROM THE ED
- \* OVERVIEW OF 2020
- \* REPORT OF PROGRESS
- \* REPORT OF FUTURE OUTLOOK
- \* OVERVIEW OF MPSEOC
- \* REVIEW OF PROGRAMS
- \* TIMELINE OF EVENTS
- \* BOARD OF DIRECTORS
- \* INSTITUTION REPRESENTATIVES





#### MISSION

THE MONTANA POST-SECONDARY EDUCATIONAL OPPORTUNITIES COUNCIL (MPSEOC) IS A NON-PROFIT ORGANIZATION REPRESENTING THE 25 INSTITUTIONS OF HIGHER EDUCATION ACROSS THE STATE OF MONTANA. THE MISSION OF THE ORGANIZATION IS THE PROMOTION OF HIGHER EDUCATION TO STUDENTS, FAMILIES, COUNSELORS, AND SCHOOLS WITH THE AWARENESS OF THE POST-SECONDARY OPPORTUNITIES AVAILABLE THROUGHOUT THE STATE OF MONTANA AND BEYOND.

#### VISION

CHANGING THE WORLD BY CONNECTING, EDUCATING AND EMPOWERING THROUGH HIGHER EDUCATIONAL OPPORTUNITIES.

#### VALUES

**INTEGRITY** | FIRM ETHICAL ADHERENCE DEMONSTRATED THROUGH PERSONAL AND PROFESSIONAL ACTIONS.

**LEADERSHIP** | THE ABILITY TO CULTIVATE RELATIONSHIPS IN ORDER TO COMPLETE THE GOALS AND MISSION WITH FLEXIBILITY AND EMPOWERMENT.

**EDUCATION** | PLACING EMPHASIS ON LIFE-LONG LEARNING.

**DIVERSE COMMUNITY** | AN INCLUSIVE ORGANIZATION THAT RESPECTS AND SUPPORTS EVERYONE'S UNIQUE CHARACTERISTICS TO ACHIEVE THEIR EDUCATIONAL GOALS.

**COLLABORATIVE RELATIONSHIPS** | PROVIDING OPPORTUNITIES FOR WORKING TOGETHER TO FORM RESPECTFUL CONNECTIONS.



## MESSAGE *from our* **EXECUTIVE DIRECTOR**

### CELEBRATING A NEW DECADE & 30+ YEARS SERVING MONTANA

Dear Friends,

Thank you for making 2019 yet another remarkable year for MPSEOC and Montana education! This last year marked the end of an exciting decade of service for the organization. Our dedicated team has done an incredible job at expanding our outreach while strengthening our programs and services. In review of this last year, we are excited to share that MPSEOC has taken many expanded, innovative steps to improve our collaboration across Montana and beyond. We have been tackling an internal review of our organizational structure, bylaws, policies, vision, values, mission, program evaluation, and foundational processes. The MPSEOC Board of Directors has dedicated invaluable time, energy, and passion to bring MPSEOC into a new decade with a strong, growing foundation.

Collaboration and partnership is the heartbeat of MPSEOC. MPSEOC is only as strong as its members and partners, and we are so proud to have such a wonderful Montana team. We are grateful for our 25 Montana member institutions, Board of Directors, Institution Representatives, and our entire membership alongside our Montana counselors and high schools working together to help students. We are so thankful to our partners and sponsors who are deeply committed in helping education. Together we are able to provide a higher quality of service to more students, counselors, parents, Montana families, and beyond. The Board and Executive Director do an in-depth review of our programs and services each year to make sure we are accomplishing our mission that was established over three decades ago. This annual report outlines this review process and outcomes.

MPSEOC grows every year in our service due to our continually expanding community who comes together to donate time, resources, and talent in support of our important mission to help students and education together.

- *This year alone we worked with over 330 + colleges, universities, high schools, agencies, and beyond to expand programing and services.*
- *Our partners sponsored our organization with over \$50,000 + of funding and support.*
- *Our Board of Directors has donated invaluable hours to dramatically strengthening MPSEOC's internal structure and overall Montana team.*
- *We have teamed with all 200 +/- Montana High Schools and all 300 +/- High School Counselors in services of students*
- *We directly impacted over 10,000 students at our college fairs and 1,000's with our online resources.*
- *Our Institutional Representatives and Institutional Members of 121 +/- have continued to show their strong commitment and collaboration to host and facilitate our team annual statewide events.*

Thank you for wholeheartedly being a part of the MPSEOC family. I am a proud member of such this incredible Montana team. We are looking forward to a bright and exciting 2020 with all of you helping students and education even more!

**AMY M. LEARY**  
EXECUTIVE DIRECTOR  
MPSEOC





# OVERVIEW *of* 2019



# 2019

*in*

# REVIEW

HELPING KEEP MONTANA EDUCATION CONNECTED  
CELEBRATING OVER 30 YEARS

**UPDATED INTERNAL STRUCTURE | BYLAWS, POLICIES, MISSION, VISION, VALUES, CONTRACTS & PROCESSES** - IN PLANNING FOR SO MANY NEW GROWTH STEPS FOR MPSEOC, WE ALSO HAVE TAKEN AND ARE CONTINUING TO TAKE DILIGENT STEPS TO DO A FULL CHECK AND UPDATE OF OUR INTERNAL STRUCTURE TO MAKE SURE ALL IS CURRENT, HEALTHY, AND IN ALIGNMENT WITH OUR GROWTH STEPS. IN 2019, WE HIRED A NONPROFIT ATTORNEY TO HELP WITH THIS REVIEW AND TO BRING OUR INTERNAL BYLAWS, CONTRACTS, ETC. CURRENT AND WITHIN MONTANA AND FEDERAL CODE.

**NEW EMPLOYEE GROWTH DEVELOPMENT** - FROM 2016-2019, MPSEOC TOOK EXCITING NEW STEPS FOR THE FIRST TIME IN HIRING A CAMPUS COMPACT / VISTA TEAM MEMBER. THIS PARTNERSHIP ALLOWED US TO DEVELOP AN INTERNAL PLAN AND STRUCTURE TO MOVE FORWARD IN EXPANDING OUR INTERNAL STRUCTURE. IN 2018 AND 2019, WE TOOK EXCITING NEW STEPS FORWARD IN THIS GROWTH BY CONTRACTING WITH A GRANT/FUND DEVELOPMENT PROFESSIONAL. WE ALSO CONTRACTED TO EXPAND OUR SOCIAL MEDIA AND DATA ENTRY HELP. THIS GROWTH POTENTIAL IS SO EXCITING FOR MPSEOC!

**PARTNER LONGER TERM MOU DEVELOPMENTS** - IN 2019, WE TOOK EXTRA STEPS WITH SOME OF CLOSE PARTNERS TO SECURE AND OUTLINE A PLAN FOR SEVERAL YEARS OF PARTNERSHIP. SPECIFICALLY WE SIGNED AN MOU WITH GEAR UP THROUGH THE 7 YEAR CYCLE OF THEIR GRANT, AND WE SIGNED A 2 YEAR AGREEMENT WITH OPI. WE ARE GRATEFUL FOR THESE COMMITTED AND DEDICATED PARTNERS FOR THEIR SUPPORT AND COLLABORATION TO HELP STUDENTS AND EDUCATION TOGETHER.

**GRANT & FUND DEVELOPMENT** - IN 2019, WE TOOK EXCITING INITIAL STEPS TO GROW AND DEVELOP NEW INCOME STREAMS. ONE OF THESE EXPANDED AREAS WAS TO SEEK OUT OPPORTUNITIES AND A PLAN FOR FUTURE GRANT WRITING AND FUND DEVELOPMENT. WE WERE LUCKY TO CONNECT TO A GRANT WRITER WHO HAS AGREED TO WORK WITH US GOING FORWARD. THIS WILL ALLOW FOR INNOVATIVE OPPORTUNITIES TO BRING IN FRESH, NEW FUNDING FOR THE MONTANA TRIBAL COLLEGE FAIRS AND MORE. WE HAVE RENEWED OUR REGISTRATION WITH GRANT STATION TO SEEK AND BE NOTIFIED OF POSSIBLE GRANT OPTIONS FOR THE FUTURE.

**SOCIAL MEDIA SHARING & REGULAR POSTING OF MONTANA COLLEGE CAMPUS HIGHLIGHTS** - THE LAST FEW YEARS, WE HAVE WORKED HARD TO CREATE A SOCIAL MEDIA POSTING PLAN ON THE MAJOR PLATFORMS. WE TRY TO MAKE A POST A DAY SHARING A FUN FACT ABOUT EACH MEMBER CAMPUS BY CYCLING THROUGH EQUALLY FOR EACH CAMPUS IN ALPHABETICAL ORDER. WE HAVE ALLOWED OUR SOCIAL MEDIA TO GROW NATURALLY WITHOUT PAYING FOR ADVERTISING. HOWEVER, IF WE WANT TO EXPAND THIS GOING FORWARD, WE MAY WANT TO LOOK AT PAID ADVERTISING.

**MONTANA ACADEMIC PROGRAMS DATABASE** - IN PARTNERSHIP WITH THE MONTANA DEPARTMENT OF LABOR AND INDUSTRY, WE HAVE COME TOGETHER TO CREATE A CORRECT, SOLID, AND RELIABLE DATABASE OF MONTANA ACADEMIC PROGRAMS. THIS DATABASE WILL BE UPDATED IN MCIS, SO STUDENTS, COUNSELORS, PARENTS, HIGH SCHOOLS, AND BEYOND ARE GETTING CORRECT INFORMATION ABOUT THE MONTANA PROGRAMS.

**HOSTING MONTANA COUNSELOR DIRECTORY & MPSEOC MEMBER DIRECTORY ONLINE** - THE LAST FEW YEARS, WE HAVE WORKED HARD TO UPDATE THESE DIRECTORIES TO BE USED BY EVERYONE ACROSS OUR STATE AND BEYOND FOR FREE. THESE ARE HOSTED ON OUR WEBSITES AND OPEN TO ALL ACCESS. THIS ALLOWS A SHARING OF INFORMATION ACROSS ALL REALMS. WE ALSO HAVE CREATED ACTIVE, ONLINE UPDATING FORMS TO TRY AND KEEP THIS AS CURRENT AS POSSIBLE. WE ALSO CHECK LISTINGS AT ALL EVENTS, AND MAKE SEVERAL CONTACTS THROUGHOUT THE YEAR TO KEEP DATA AS CURRENT AS WE ARE ABLE.

**MONTANA TRAVEL GUIDEBOOK ONLINE & APP** - IN THE LAST FEW YEARS, MPSEOC CREATED THE FIRST EVER MONTANA TRAVEL GUIDEBOOK AS A WAY TO POTENTIALLY EXPAND A NEW INCOME STREAM, BUT ALSO, TO OFFER A GREATER SERVICE TO OUR TRAVELING PROFESSIONALS AS THEY ATTEND OUR ANNUAL EVENTS AROUND MONTANA. IT ALSO ALLOWS US TO PROMOTE OUR LOCAL MONTANA BUSINESSES IN ACCORDANCE WITH OUR EVENTS. OVERALL, THIS IS A NEW STEP THAT HAS THE POTENTIAL TO GROW IN EXPANDED WAYS INTO THE FUTURE.

**UPDATED PARTNERSHIP/SPONSORSHIP PLAN & OUTREACH** - IN THE LAST FEW YEARS, AN UPDATED SPONSORSHIP PLAN HAS BEEN CREATED AND UTILIZED. INVITATIONS TO COLLABORATE WITH MPSEOC WERE SENT OUT TO HUNDREDS OF NEW ORGANIZATIONS AND AGENCIES WITH MUCH RESEARCH, PLANNING, COORDINATION WITH PAST SPONSORS, AND A VISION FOR FUTURE GROWTH, A NEW PLAN WAS CREATED. IN THE FUTURE, WITH MORE HELP FROM OUR GRANT/FUND DEVELOPMENT PROFESSIONAL, THIS AREA COULD CONTINUE EXPAND EVEN MORE, AND THIS PLAN COULD BE A VERY EXCITING GROWTH OPTION FOR MPSEOC.

**INCOME MANAGEMENT** - THE EXECUTIVE DIRECTOR & BOARD OF DIRECTORS HAVE MONITORED AND RE-INVESTED ALL CERTIFICATE OF DEPOSIT FUNDS AND SAVINGS FOR THE ORGANIZATION. THE LAST FEW YEARS, WE TOOK NEW STEPS TO INVEST CD INTO MORE PROFITABLE SHARES WITH DA DAVIDSON WHICH IS SHOWING SUCCESS EVEN WITH SOME DOWN SHIFTS IN THE MARKET OVERALL.

**ACCOUNTING & ANNUAL TAX FILINGS** - THE EXECUTIVE DIRECTOR WORKED WITH CONTRACTED ACCOUNTANT TO FILE ALL NECESSARY TAX AND PAYROLL DOCUMENTATION TO THE STATE OF MONTANA AND THE IRS. THE EXECUTIVE DIRECTOR PREPARED ALL YEAR-END BUDGET REPORTS AND TAX PAPERWORK TO PRESENT TO THE BOARD OF DIRECTORS AND THE CONTRACTED ACCOUNTANT.

**OVERVIEW OF ACCOUNTING & BUDGET IN 2019** - THE EXECUTIVE DIRECTOR & BOARD OF DIRECTORS CONTINUE TO STREAMLINE EXPENSES AND BUDGETING ITEMS TO FIT FUTURE PROJECTED GOALS. THROUGH EFFICIENT RESTRUCTURING, CUTTING COSTS, AND BY INCREASING THE EXECUTIVE DIRECTOR'S DUTIES IN-HOUSE, MPSEOC HAS BECOME MORE EFFICIENT IN ITS SPENDING. OVERALL, 2019 WAS A SUCCESSFUL YEAR OF GROWTH AND INNOVATION FOR MPSEOC'S FUTURE WITH OUR HIGHEST INCOME YEAR AND ALSO CUTTING EXPENSES.



## REPORT *of* PROGRESS



### A SPECIAL THANKS TO OUR SPONSORSHIPS / PARTNERS

IN 2019 WE WERE SO GRATEFUL TO BE ABLE TO NOT ONLY PARTNER BUT ALSO TEAM ON FUNDING AND SPONSORSHIP WITH SO MANY ORGANIZATIONS. WE SIMPLY COULD NOT OFFER THE PROGRAMS WE DO WITHOUT EVERYONE'S TEAM HELP AND SUPPORT! A VERY SPECIAL THANK YOU TO THOSE WHO HELP MAKE OUR ANNUAL EVENTS AND PROGRAMS POSSIBLE.

- GOOGLE GRANTS - \$146,000 / YEAR IN ADWORDS ADVERTISING
- GEAR UP - \$20,000 (\*7 YEAR MOU)
- MONTANA UNIVERSITY SYSTEM - STUDENT FINANCIAL SERVICES - \$5,000
- OFFICE OF PUBLIC INSTRUCTION - \$6,000 (\* INCLUDES ESTIMATED MET NET FEES - 2 YR CONTRACT)
- AMERICAN INDIAN COLLEGE FUND - \$3,000
- REACH HIGHER MONTANA - \$2,000

### ADDITIONAL PARTNERS

IN 2019, WE INCREASED COLLABORATION EFFORTS AND PARTNERSHIP WITH AGENCIES, SUCH AS: PNACAC, NACAC, ACT, THE COLLEGE BOARD, MONTANA DEPARTMENT OF LABOR AND INDUSTRY, CAMPUS COMPACT / VISTA, MACRAO | MASFAA, DUAL ENROLLMENT, MONTANA SCHOOL COUNSELORS ASSOCIATION, MONTANA COLLEGE ACCESS NETWORK, JOB CORPS, TRIO, TALENT SEARCH, AND MANY MORE.

### NEW! COLLEGEBOARD REPRESENTATION ON WESTERN REGIONAL COUNCIL

IN 2019 OUR MPSEOC EXECUTIVE DIRECTOR WAS NOMINATED AND ELECTED TO THE COLLEGE BOARD WESTERN REGIONAL COUNCIL FOR 3 YEARS. THIS WILL ENABLE OUR MPSEOC TEAM TO STAY CURRENT WITH CHANGING NATIONAL AND REGIONAL EDUCATION TRENDS AND UPDATES. ALSO, THIS ALLOWS FOR EXPENSE PAID TRAINING FOR THE E.D. TO ATTEND NATIONAL CONFERENCES AND TRAININGS. OVERALL, THIS WILL HELP US STAY CURRENT IN SHARING RESOURCES WITH OUR MEMBERS AND CONSTITUENTS IN PROFESSIONAL DEVELOPMENT AS WELL AND BUILD PARTNERSHIP AND RELATIONS WITH THE COLLEGE BOARD ORGANIZATION AS A WHOLE.

### MPSEOC MEMBER ELECTIONS & AWARDS

THE LAST FEW YEARS HAVE BEEN EXCITING IN OFFERING NEW MEMBER AWARDS & ELECTIONS ONLINE. WE WILL BE CONTINUING THIS EFFORT TO SHOW SUPPORT AND APPRECIATE FOR OUR MEMBER'S GOOD WORK, AND WE HOPE YOU WILL SHARE YOUR NOMINATIONS! ALSO, IN THE LAST COUPLE YEARS, WE HAVE WORKED HARD TO HOST OUR MPSEOC BOARD OF DIRECTOR ELECTIONS ONLINE. THIS ALLOWED YOU AND YOUR CAMPUSES MORE TIME TO REVIEW THE CANDIDATES AND DECIDE AS A TEAM ON YOUR FINAL VOTES. WE ARE EXCITED TO ONCE AGAIN OFFER THIS ONLINE NOMINATION AND VOTING PROCESS IN 2020. PLEASE SHARE ANY IDEAS/COMMENTS/FEEDBACK YOU HAVE ON HOW WE CAN MAKE THIS EVEN MORE HELPFUL TO YOU AND THE OVERALL PROCESS. THANK YOU!

### SUPPORT MONTANA STUDENTS CAMPAIGN & COLLEGE PRIDE WEEK CELEBRATION | SEPTEMBER

IN THE LAST FEW YEARS, WE HAVE EXPANDED THE MONTANA COLLEGE PRIDE WEEK CELEBRATION TO INCLUDE A SOCIAL MEDIA CAMPAIGN, A WEBSITE, SNAPCHAT FILTERS, FACEBOOK IFRAMES, AND AN OPPORTUNITY FOR ALL CAMPUSES, HIGH SCHOOLS, AGENCIES, AND MONTANA COMMUNITIES TO SHOW THEIR SUPPORT OF OUR MONTANA STUDENTS IN NEW, EXPANDED WAYS. WE CREATED A WEBSITE ([WWW.SUPPORTMONTANASTUDENTS.ORG](http://WWW.SUPPORTMONTANASTUDENTS.ORG)) AND A DONATION CAMPAIGN PAGE. FROM POSTING PICTURES WITH "I SUPPORT MONTANA STUDENTS" POSTERS, ACCEPTING STUDENT SCHOLARSHIP DONATIONS, TO ASKING STAFF AND FACULTY AT THE HIGH SCHOOLS TO WEAR THEIR COLLEGE GEAR, THIS CELEBRATION CONTINUES EACH YEAR AS A TRADITION. OVERALL THIS STATEWIDE CELEBRATION STARTED THE SCHOOL YEAR OFF BY SHOWING STUDENTS THEY ARE SUPPORTED IN THIS HIGHER EDUCATION JOURNEY. ALSO, IT ADDED ADDITIONAL EXCITEMENT TO OUR SEPTEMBER COLLEGE FAIRS.

FOR MORE INFORMATION AND TO PREVIEW PICTURES VISIT: [WWW.SUPPORTMONTANASTUDENTS.ORG](http://WWW.SUPPORTMONTANASTUDENTS.ORG)

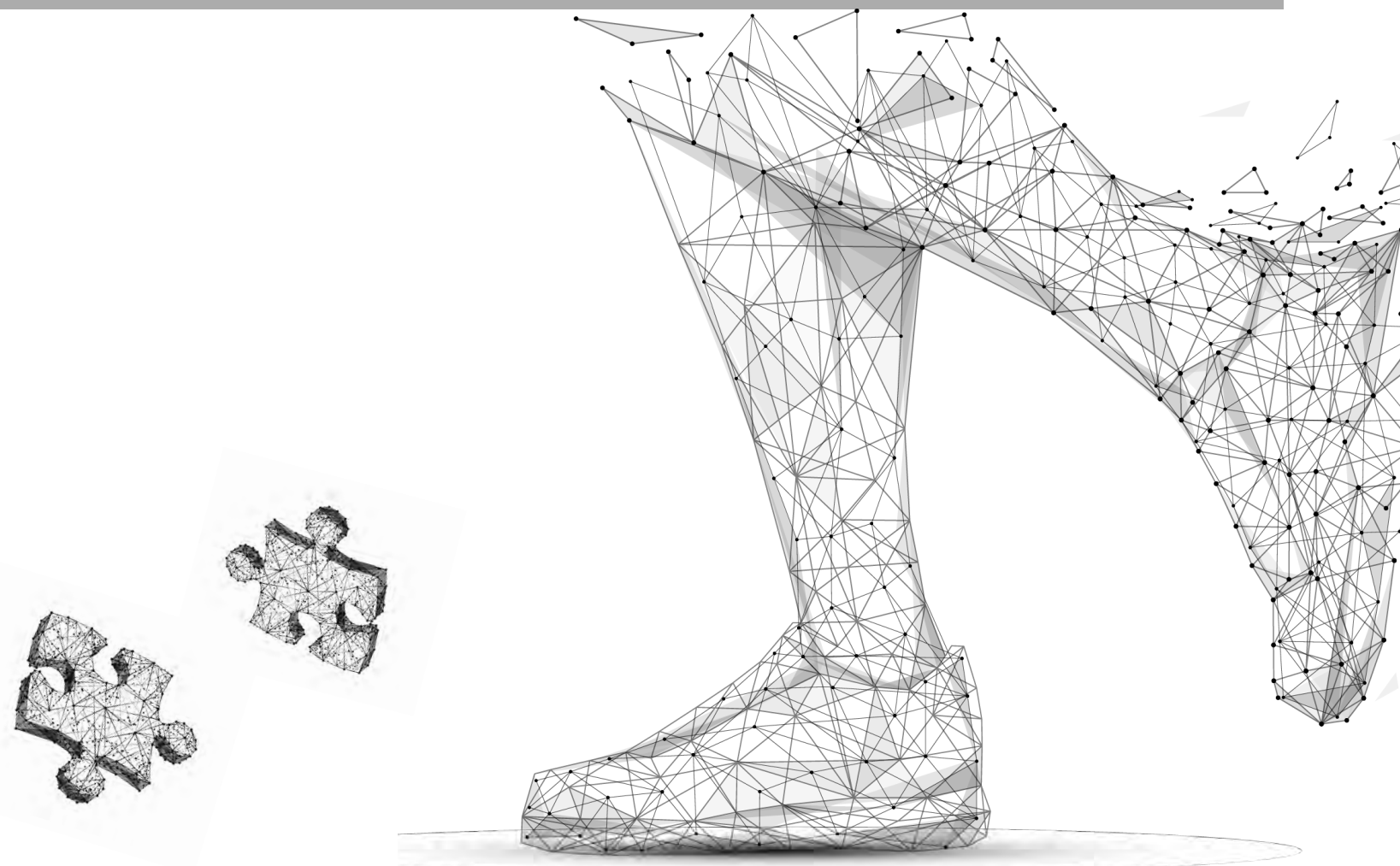
### OPI CREDIT | CAMPUS COUNSELOR TRAINING

THIS IS AN OPPORTUNITY FOR YOUR INSTITUTION TO TRAIN COUNSELORS ON YOUR CAMPUS. WE WORKED WITH OPI TO CREATE THIS PROGRAM FOR YOU TO OFFER CREDIT TO MONTANA COUNSELORS FOR AN ON-CAMPUS TRAINING PROGRAM. A FEW CAMPUSES HAVE UTILIZED THIS OPTION IN THE LAST TWO YEARS AND HAD SUCCESS! WE HOPE THAT YOU WILL TAKE A LOOK AT THIS OPTION IN THE FUTURE AS A WAY TO BUILD RELATIONS WITH OUR MONTANA COUNSELORS.

FOR MORE INFORMATION VISIT: [WWW.MPSEOC.ORG/NEW-COUNSELOR-CAMPUS-TRAINING.HTML](http://WWW.MPSEOC.ORG/NEW-COUNSELOR-CAMPUS-TRAINING.HTML)

### DO YOU HAVE PARTNERSHIP IDEAS FOR MPSEOC?

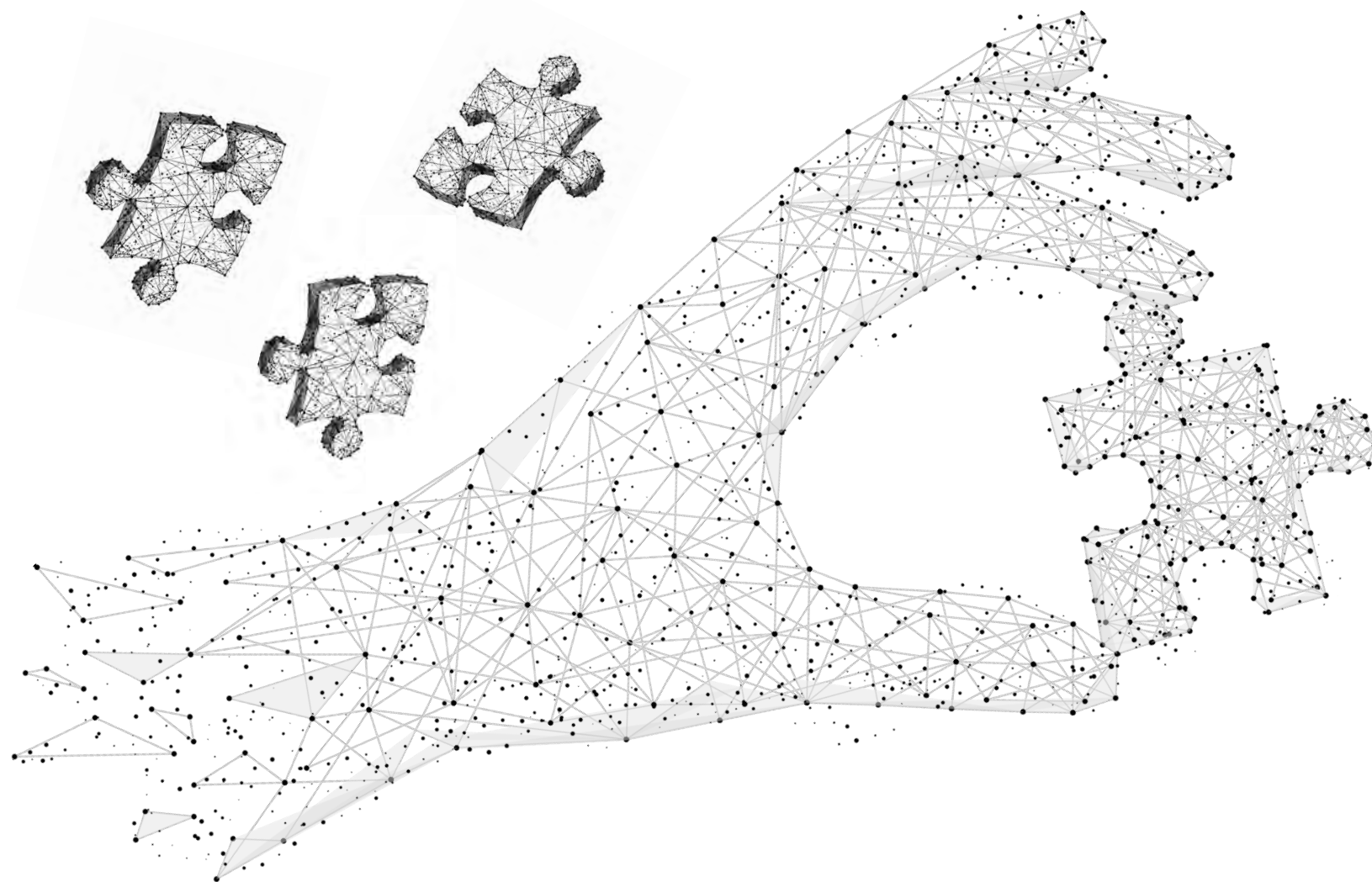
IF YOU HAVE ANY ADDITIONAL SPONSORSHIP IDEAS, WE APPRECIATE YOUR TEAM HELP TO KEEP EXPANDING THESE EFFORTS AND RELATIONS. SEE A FULL LISTING OF WHO MPSEOC WORKED WITH IN 2019 ON THE BACK COVER OF THIS REPORT.





# REPORT *of* PROGRESS

REVIEW IN NUMBERS



## PROGRESS

### MONTANA COLLEGE FAIRS

- 10,000+ MONTANA STUDENTS ATTENDED 18 FAIRS | 3 REGIONS | SEPTEMBER 2019
- ESTIMATED THAT 98% OF MONTANA STATE HIGH SCHOOLS ATTENDED.
- 98% OF STATE HIGH SCHOOLS HAD AT LEAST A PORTION OF THEIR STUDENTS REGISTER ONLINE BEFORE THE FAIR.
- 197 MONTANA HIGH SCHOOLS INVITED TO ATTEND.
- 17 NEW SCHOOLS ATTENDING THIS YEAR (HS, ALTERNATIVE, OR COLLEGE)
- 48% OF STUDENTS REGISTERED WERE SENIOR
- 41% OF STUDENTS REGISTERED WERE JUNIORS
- 2% OF STUDENTS REGISTERED WERE SOPHOMORES
- 9% OF STUDENTS REGISTERED WERE OTHER (TRANSFER, HOME-SCHOOLED, SOPHOMORE, FRESHMAN, ETC.)
- 52% OF STUDENTS WERE FEMALE
- 44% OF STUDENTS WERE MALE
- 4% OF STUDENTS DID NOT DESIGNATE GENDER
- 189 STUDENTS REGISTERED WITH NO HIGH SCHOOL DESIGNATED - A MIX OF POTENTIAL HOME-SCHOOLED / NON-TRADITIONAL / TRANSFER STUDENTS

### SUMMER CONFERENCE

- HOSTED IN HELENA, MONTANA
- NATIONALLY RENOWNED KEYNOTE SPEAKERS
- 99 ATTENDEES REGISTERED FOR THIS EVENT
- 40 DIFFERENT INSTITUTIONS REPRESENTED
- 20 MONTANA COLLEGES AND UNIVERSITIES REPRESENTED
- 9 STATE AGENCIES AND OR OTHER MONTANA TRAINING PROGRAMS REPRESENTED
- 7 OUT OF STATE COLLEGES / UNIVERSITIES / AGENCIES REPRESENTED
- 4 OTHER ATTENDEES / PRESENTERS

### COUNSELOR UPDATE

- HOSTED 9 SITES ACROSS MONTANA
- TOTAL OF 229 REGISTRATIONS FOR THIS EVENT;
- 177 MONTANA COUNSELORS ATTENDED
- 52 OTHER EDUCATORS ATTENDED (COLLEGES, AGENCIES, GEAR UP, TRIO, ETC.)
- 4 MONTANA TRIBAL COLLEGES PRESENTED AND ALL 7 SUBMITTED MATERIAL FOR HANDOUT.

### GUIDE BOOK TO HIGHER EDUCATION

- OFFERED IN PRINT AND ONLINE @ WWW.MONTANACOLLEGES.COM/GUIDEBOOK
- 52 ADVERTISERS IN THE GUIDE BOOK: 25 MONTANA COLLEGES AND UNIVERSITIES, 21 OUT OF STATE COLLEGES AND UNIVERSITIES, AND 6 AGENCIES.

### MONTANA TRIBAL COLLEGE FAIRS

- HOSTED 6 EVENTS AT 6 MONTANA TRIBAL COLLEGES ALL 7 MONTANA TRIBAL COLLEGES PARTICIPATED IN THESE EVENTS.
- 2009 - 18 TABLE REPRESENTATIVES / 2015 - 32 TABLE REPRESENTATIVES. / 2016 - 46 TABLE REPRESENTATIVES / 2017 - 61 TABLE REPRESENTATIVES / 2019 - 72+ REPRESENTATIVES
- YEAR AFTER YEAR, THIS EVENT KEEPS GROWING!

### CAMPUS COUNSELOR TRAINING

- OFFER COUNSELOR OPI CREDIT FOR CAMPUS TRAINING. OFFERED THROUGHOUT THE YEAR AS NEEDED.

### BUDGET REPORT

- ONE OF MPSEOC'S HIGHEST INCOME YEARS IN THE HISTORY OF THE ORGANIZATION.
- DUE TO CAREFUL STREAMLINING AND PLANNING, EXPENSES DECREASED SIGNIFICANTLY IN 2019

### MONTANA TRAVEL GUIDE BOOK / ONLINE & APP

- OFFERED IN PRINT, ONLINE, IN APP FORM @ WWW.MONTANACOLLEGEFAIRS.COM/GUIDE

### WEBSITES

- MAJOR GOOGLE RESTRICTIONS IMPOSED | 2019 WAS A YEAR OF ADJUSTMENT WITH GOOGLE ADWORDS AND OUR GOOGLE GRANT. THEIR TEAMS REQUIRED MORE STRICT POLICY ON USE AND ALSO LIMITED OUR REACH ACROSS THE WORLD. THEREFORE, WE HAVE HAD TO LIMIT OUR TARGET ADGROUPS WHICH AS DYNAMICALLY IMPACTED OUR OVERALL SITE NUMBERS. THE CHALLENGE PRESENTED MUCH LESS TRAFFIC TO OUR SITES WORLD-WIDE. THE OPPORTUNITY IS THAT OUR AUDIENCE TARGETED IS MORE ACCURATE.
- MEMBERSHIP WEBSITE | WWW.MPSEOC.ORG | VISITORS = 4,207 | PAGE VIEWS = 8,635
- STUDENT, COUNSELORS, PARENTS WEBSITE | WWW.MONTANACOLLEGES.COM / .ORG / .NET | VISITORS = 18,942 | PAGE VIEWS = 38,790
- MONTANA COLLEGE FAIRS WEBSITE / WWW.MONTANACOLLEGEFAIRS.COM | VISITORS = 3,403 | PAGE VIEWS = 7,850
- MONTANA TRIBAL COLLEGE FAIRS / TEAM | WWW.MONTANATRIBALCOLLEGES.ORG | VISITORS = 705 | PAGE VIEWS = 2,375
- SUPPORT MONTANA STUDENTS CAMPAIGN & COLLEGE PRIDE | WWW.SUPPORTMONTANASTUDENTS.ORG | VISITORS = 4,027 | PAGE VIEWS = 8,635
- OVERALL WEB ANYTICTIS = VISITORS = 31,284 | PAGE VIEWS = 66,285
- \*RECOMMENDATION - WE MAY WANT TO LOOK INTO SEO SUPPORT TO LOOK INTO THIS FOR THIS COMING YEAR.

### SOCIAL MEDIA

- FACEBOOK - 1408 FOLLOWERS / 1377 LIKES / 408 FRIENDS
- TWITTER - 138 FOLLOWING & 240 FOLLOWERS
- INSTAGRAM - 895 POSTS, 174 FOLLOWING, AND 343 FOLLOWERS
- LINKEDIN - 222 CONNECTIONS
- SNAPCHAT, PINTEREST, AND A YOUTUBE CHANNEL.

### MEMBERSHIP REPORT

- 119 TOTAL INDIVIDUAL MEMBERS FROM THE MONTANA INSTITUTIONS.
- 25 MONTANA ACCREDITED COLLEGES AND UNIVERSITIES REPRESENTED. 9-2-YEAR COLLEGES, 7-TRIBAL COLLEGES, 6-4 YEAR PUBLIC COLLEGES, 3-4 YEAR PRIVATE COLLEGES

### COUNSELOR REPORT

- 312 MONTANA HIGH SCHOOL COUNSELORS WITH WHICH WE COLLABORATE.
- 197 MONTANA HIGH SCHOOL WITH WHICH WE COLLABORATE.

### STUDENT REPORT

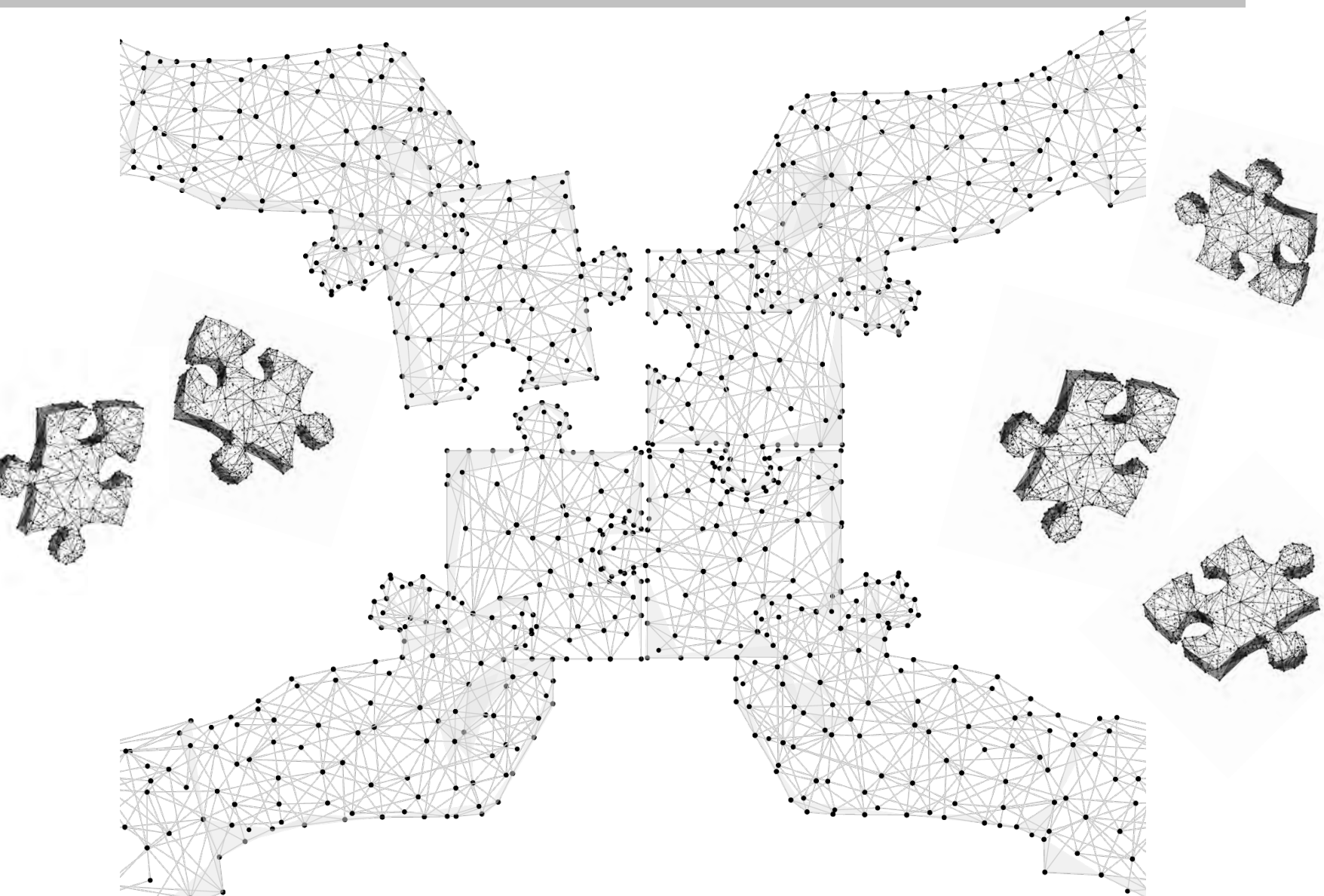
- 10,000+ MONTANA STUDENTS ATTEND THE SEPTEMBER COLLEGE FAIRS
- ESTIMATED THAT 1000+ PEOPLE ATTENDED THE 2019 MONTANA TRIBAL COLLEGE FAIRS
- OF THE 1,000'S OF ONLINE VISITORS TO OUR MONTANACOLLEGES.COM WEBSITE, MANY OF THESE VISITORS ARE STUDENTS.





## REPORT of FUTURE OUTLOOK

POTENTIAL CHALLENGES & OPPORTUNITIES



### **GOTOCOLLEGEFAIRS / STUDENT ONLINE REGISTRATION TECHNOLOGY CHALLENGES**

THIS LAST SEASON OF FAIRS PRESENTED SEVERAL TECHNICAL ISSUES WITH OUR ONLINE REGISTRATION PROVIDER. THEY DID A MAJOR UPGRADE TO THEIR SYSTEM IN THE FALL RIGHT BEFORE OUR SEPTEMBER FAIRS, AND WE FACED MANY ERRORS, CHALLENGES, AND SHARED CONCERNS FROM OUR CONSTITUENTS. THE LAST FEW YEARS WE HAVE ALSO FACED OTHER TECHNICAL CHALLENGES WITH THIS SYSTEM, SO THE BOARD IS TAKING STEPS TO RESEARCH, TEST, AND MAKE SURE WE ARE USING THE MOST EFFECTIVE RELIABLE SYSTEM FOR OUR EVENTS GOING FORWARD. THANK YOU TO ALL OF YOU WHO SHARE YOUR FEEDBACK WITH US ON THIS PROCESS. WE ARE WORKING HARD TO ENSURE WE ARE USING THE BEST SYSTEM FOR YOU, STUDENTS, COUNSELORS, AND OUR EVENTS.

### **NATIONAL & STATE TRANSITION TO EARLIER FINANCIAL AID / ADMISSIONS DEADLINES FOR STUDENTS**

IN THE LAST FEW YEARS, THESE DEADLINES FOR STUDENTS HAVE MOVED EARLIER IN THE YEAR. THEREFORE, SENIORS ARE FORCED TO MAKE THEIR DECISIONS EARLY IN THE FALL OF THEIR SENIOR YEAR. THIS NEW MOVEMENT IS CHANGING COUNSELING & RECRUITMENT MODELS. THEREFORE, OUR EVENTS HAVE ALSO SEEN THIS TRANSITION, AS MORE JUNIORS AND SOPHOMORES ARE SHOWING INTEREST AT AN EARLIER AGE TO MEET EARLIER DEADLINES. THIS IS A SHIFT WE ARE STILL WORKING TO ACCOMMODATE AND WILL BE FOR YEARS TO COME IN EDUCATION AND IN OUR SERVICE TO STUDENTS.

### **EXPANDED INCOME STREAMS & GRANT / FUND DEVELOPMENT**

IN THE LAST FEW YEARS, MPSEOC STARTED TO RESEARCH, EXPLORE, AND SEEK NEW STREAMS OF INCOME. IN PLANNING FOR A NEW EMPLOYEE MODEL, WE WILL NEED TO HAVE SOLID, LONG-TERM FUNDING IN PLACE. THEREFORE, WE HAVE BEEN EXPLORING NEW AVENUES OF INCOME (SUCH AS, THE MONTANA TRAVEL GUIDE BOOK WHICH BROUGHT IN CLOSE TO \$4000 OF EXTRA INCOME IN 2017-2018, EXPANDING OUR INVITES FOR OUR FAIRS AND EVENTS, EXPANDING OUR INVITES TO OUR SUMMER CONFERENCE IN 2018 & 2019, WE DEVELOPED A GRANT WRITING CONTRACT, EXPANDING PARTNERSHIP/SPONSORSHIP RELATIONS, ETC.). DUE TO THIS STEP, MPSEOC WAS ABLE TO TAKE FURTHER STEPS IN 2019 IN CONTRACTING WITH A GRANT/FUND DEVELOPER WHO WILL HELP US GROW OUR INCOME SUPPORT FROM NEW AVENUES. WITH THIS EXPANSION, THE BOARD AND ED ARE WORKING HARD TO CONTINUE TO BUILD AND GROW A RELIABLE FUNDING FOUNDATION FOR YEARS TO COME.

### **INTERNAL GROWTH & DEVELOPMENT | BYLAW, POLICIES, MISSION, VISION, & VALUE STATEMENT REVIEW**

IN 2019, THE BOARD OF DIRECTORS TOOK STRONG STEPS IN ESTABLISHING A FULL REVIEW AND AUDIT OF MPSEOC'S INTERNAL DOCUMENTS, & STRUCTURE. THE BOARD FORMED A BYLAW COMMITTEE & POLICY COMMITTEE TO WORK WITH A NONPROFIT ATTORNEY TO DO A FULL CHECK OF YOUR BYLAWS, CONTRACTS, AND POLICIES. ALSO, THE ENTIRE BOARD PARTICIPATED IN PROFESSIONAL TRAINING IN REVIEWING OUR MISSION, VISION, AND VALUES STATEMENTS. WE WILL CONTINUE THIS WORK OF AN INTERNAL AUDIT OF ALL OF OUR FORMAL POLICIES INTO 2020. OVERALL, THIS IS BEEN A HEALTHY STEP TO BRING MPSEOC CURRENT AND UP TO CODE ON OUR OFFICIAL DOCUMENTS, PROCESS, AND PROTOCOLS. THIS WORK HAS HELPED IMMENSELY TO FORTIFY OUR ORGANIZATIONAL FOUNDATION.

### **OUT OF STATE FAIRS & NATIONAL CONFERENCES STARTING EARLIER IN SEPTEMBER / MORE COMPETITION**

DUE TO MANY STATES EXPANDING THEIR FAIRS INTO EARLIER SEPTEMBER, IT IS CAUSING MORE COMPETITION FOR THE MONTANA FAIRS. FOR INSTANCE, WITH THE NORTH DAKOTA/WYOMING/CALIFORNIA FAIRS OVERLAPPING WITH OUR ALL OUR REGIONS OF FAIRS, WE TEND TO LOSE AN ESTIMATED \$10,000 TO \$15,000 IN INCOME FROM COLLEGES AND UNIVERSITIES THAT COULD NOT GO TO ALL THE MONTANA, NORTH DAKOTA, WYOMING, AND CALIFORNIA FAIRS AT THE SAME TIME. THE EXECUTIVE DIRECTOR HAS BEEN IN CONTACT WITH THE ND, WY, AND CA FAIR CONTACTS IN HOPES TO WORK TOGETHER WHERE POSSIBLE. HOWEVER, WE WILL KEEP WORKING ON THIS TO SEE IF THERE IS A BETTER ALTERNATIVE FOR THE FUTURE. ALSO, NACAC'S ANNUAL CONFERENCE OVERLAPS WITH OUR LAST WEEK OF THE WESTERN REGION WHICH ALSO BLOCKS SOME COLLEGE REPRESENTATIVES FROM BEING ABLE TO ATTEND OUR MONTANA FAIRS. THIS IS ALSO AN ONGOING CHALLENGE WITH OUR MONTANA TRIBAL COLLEGE FAIRS AS WE MOVE INTO THE MARCH TIME-FRAME DUE TO THE NATIONAL SPRING COLLEGE FAIRS THAT ARE OFFERED.

### **POTENTIAL ECONOMIC HARDSHIP ON CAMPUSES & TRAVEL CUTS**

AS ALL CAMPUSES ARE FACING THESE TRAVEL RESTRICTIONS, MANY CAMPUSES HAVE FACED DRASTIC TRAVEL CUTS IN THE LAST FEW YEARS DUE TO THESE ECONOMIC CHALLENGES. THEREFORE, THESE CUTS IN TRAVEL HAVE CAUSED SOME DECLINES IN ATTENDANCE AT OUR MONTANA FAIRS AND EVENTS. HOWEVER, BEING THAT WE WERE PROACTIVE ON THIS TOPIC THE LAST FEW YEARS, WE HAVE BEEN ABLE TO BALANCE THIS TRANSITION BY SEEKING NEW COLLEGES, UNIVERSITIES, AND AGENCIES TO ATTEND. IN THE LAST FEW YEARS, WE INCREASED INVITES BY 9,000+ ACCREDITED COLLEGES AND UNIVERSITIES FROM AROUND THE WORLD. THIS HAS HELPED GAIN NEW INTEREST TO BALANCE OUT MOST OF THE LOSSES FROM THIS CHALLENGE OVER THE LAST COUPLE YEARS, AND IN THE LAST FEW YEARS, WE EVEN BROUGHT IN SOME OF OUR LARGEST PROFITS FROM THE COLLEGE FAIRS.

### **DECLINE IN MONTANA HIGH SCHOOL STUDENTS**

UNFORTUNATELY, MONTANA HAS HAD THE CHALLENGE OF HAVING TO FACE THE REALITY OF DECLINING HIGH SCHOOL GRADUATES FOR MANY YEARS. THIS HAS BEEN NOTICED BY OUT-OF-STATE COLLEGES AND AGENCIES WHO ATTEND OUR EVENTS. THEREFORE, SOME OF THESE COLLEGES HAVE STARTED TO RECRUIT IN OTHER STATES THAT HAVE INCREASING NUMBERS. WHEN THEY LEAVE OUR FAIR EVENTS WITH LESS CONTACTS THAN LAST YEAR DUE TO THE DECLINING NUMBERS, SOME CHOOSE NOT TO COME BACK. WE HAVE WORKED HARD TO KEEP RELATIONS STRONG WITH COUNSELORS AND BOOST ATTENDANCE OF THE HIGH SCHOOLS AND IN 2019 WE HAD A 98% ATTENDANCE FROM THE MONTANA HIGH SCHOOLS REPRESENTED. WE ALSO HAVE TRIED TO ALLEVIATE THIS CHALLENGE BY EXPANDING OUR STUDENT INVITE TO INCLUDE HIGH SCHOOL SOPHOMORES AS WELL. THIS HAS HELPED TO CURB THIS TREND, BUT IT HAS BEEN AN ADDITIONAL CHALLENGE AND DETERRENT WHEN TRYING TO GROW THE FAIR COLLEGE REPRESENTATION. EVEN WITH THIS CHALLENGE, THE BOARD AND THE EXECUTIVE DIRECTOR HAVE BEEN PROACTIVE BY RESEARCHING AND INCREASING OUR DATABASE OF NEW INVITES WITH 5,000+ ACCREDITED COLLEGES AND UNIVERSITIES FROM AROUND THE WORLD. THESE NEW INVITES ALLOWED US TO GAIN NEW INTEREST AND NEW ATTENDANCE WHICH HELPED TO BALANCE OUT MOST OF THE LOSSES FROM THIS CHALLENGE OVER THE LAST COUPLE YEARS.

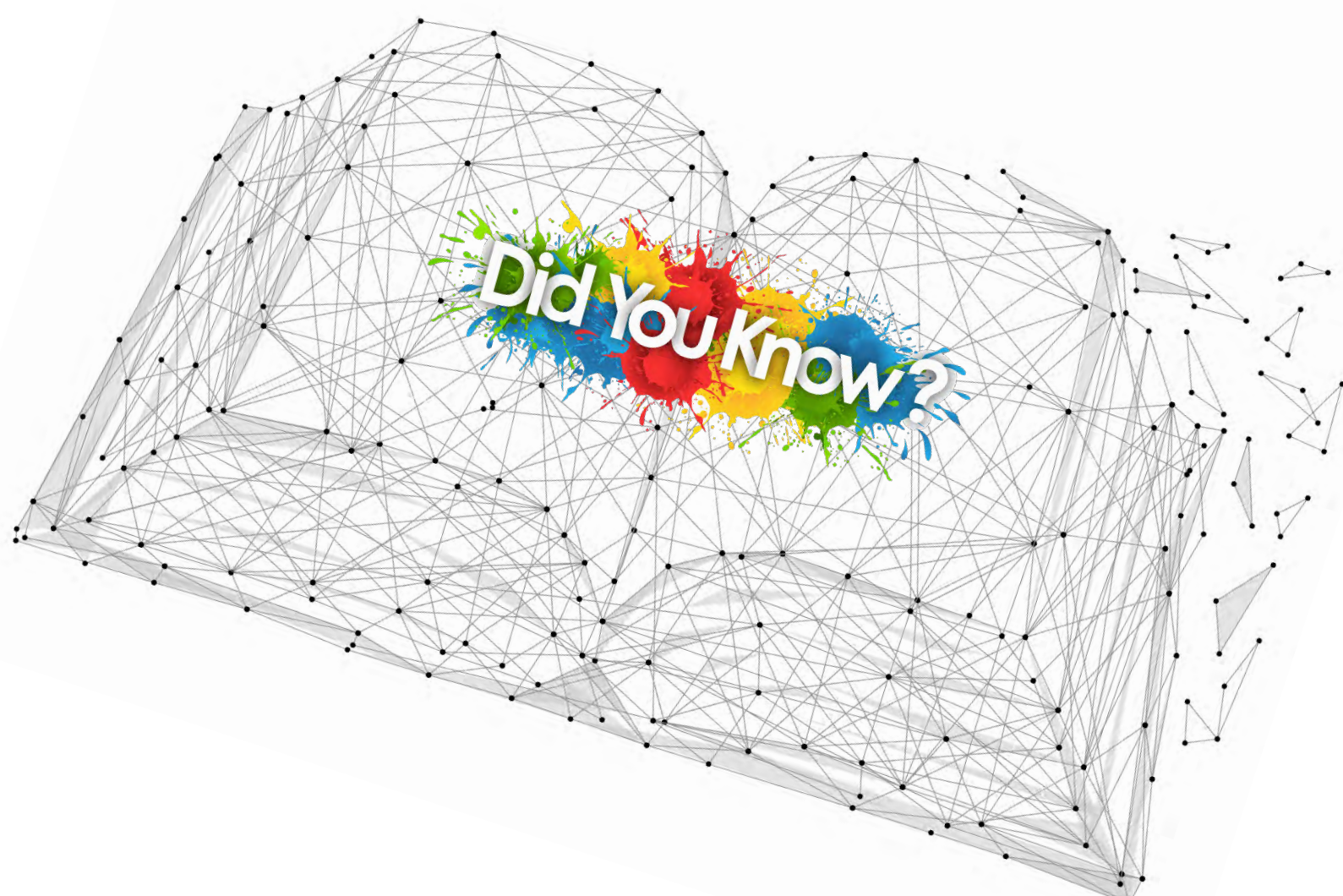
### **MONTANA TRIBAL COLLEGE FAIR CIRCUIT & TEAM**

OVER THE LAST SEVERAL YEARS, THIS STATEWIDE COLLABORATION AND TEAM HAS SEEN MAJOR GROWTH AND EXPANSION OF SERVICE TO STUDENTS WHICH IS VERY EXCITING! DUE TO THIS GROWTH, THE EXPENSES FOR MPSEOC HAVE ALSO INCREASED OVER TIME, WITH THE INCREASED ATTENDANCE, THE INCOME FOR THE FAIRS IS STARTING TO BALANCE OUT THE EXPENSES INCURRED WHICH IS WONDERFUL. ESPECIALLY BECAUSE WE RELY GREATLY ON THE PARTNERSHIP WITH AICF AND GEAR UP TO HELP FUND ANY ADDITIONAL SUPPORT FOR THIS CIRCUIT AND COLLABORATION. IN 2017 GEAR UP WAS AWARDED ANOTHER SEVEN YEAR GRANT CYCLE, SO WE ARE HOPEFUL THAT WE WILL CONTINUE TO HAVE SUPPORT FROM THEIR PARTNERSHIP FOR THE NEXT SEVEN YEARS. OVERALL, THE GOOD NEWS FOR THE FUTURE IS THAT THE LAST COUPLE YEARS WAS A START TO A NEW TRANSITION FOR THE TRIBAL COLLEGE TEAM AS THEY HAVE CREATED THEIR OWN EXECUTIVE TEAM FOR LEADERSHIP AND DIRECTION. MPSEOC IS ALSO EXCITED TO SAY THAT WE TOO TOOK ADDITIONAL STEPS AT IN 2018 TO SEEK A GRANT WRITING AND DEVELOPMENT STRATEGY TO HOPEFULLY HELP SUSTAIN THIS TEAM AND CIRCUIT INTO 2020 AND BEYOND.



## OVERVIEW *of* MPSEOC

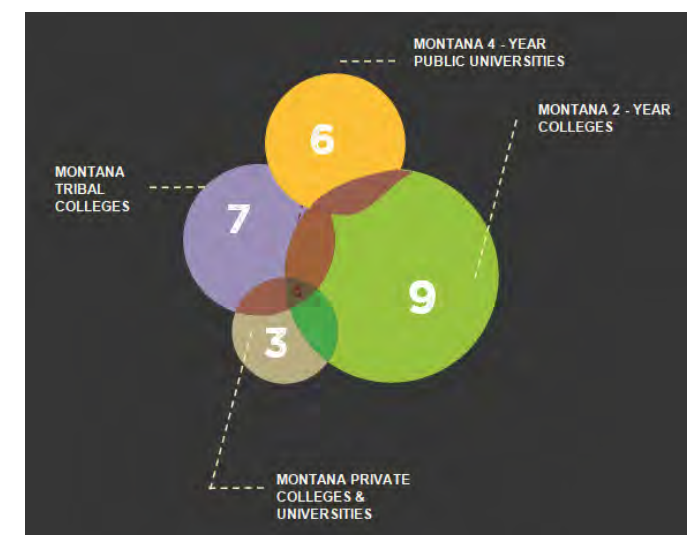
MEMBERSHIP, PROGRAMS, PARTNERSHIP, TIMELINE,  
BOARD OF DIRECTORS & INSTITUTION REPRESENTATIVES



### MEET OUR MEMBER INSTITUTIONS

- AANIIH NAKODA COLLEGE | [WWW.ANCOLLEGE.EDU/](http://WWW.ANCOLLEGE.EDU/)
- BLACKFEET COMMUNITY COLLEGE | [WWW.BFCC.EDU/](http://WWW.BFCC.EDU/)
- CARROLL COLLEGE | [WWW.CARROLL.EDU](http://WWW.CARROLL.EDU/)
- CHIEF DULL KNIFE COLLEGE | [WWW.CDKC.EDU](http://WWW.CDKC.EDU/)
- CITY COLLEGE MONTANA STATE UNIVERSITY BILLINGS | [WWW.CITYCOLLEGE.MSUBILLINGS.EDU](http://WWW.CITYCOLLEGE.MSUBILLINGS.EDU/)
- DAWSON COMMUNITY COLLEGE | [WWW.DAWSON.EDU](http://WWW.DAWSON.EDU/)
- FLATHEAD VALLEY COMMUNITY COLLEGE | [WWW.FVCC.EDU](http://WWW.FVCC.EDU/)
- FORT PECK COMMUNITY COLLEGE | [WWW.FPCC.EDU](http://WWW.FPCC.EDU/)
- GALLATIN COLLEGE MSU | [WWW.GALLATIN.MONTANA.EDU](http://WWW.GALLATIN.MONTANA.EDU/)
- GREAT FALLS COLLEGE MSU | [WWW.GFCMSU.EDU](http://WWW.GFCMSU.EDU/)
- HELENA COLLEGE UNIVERSITY OF MONTANA | [WWW.HELENACOLLEGE.EDU](http://WWW.HELENACOLLEGE.EDU/)
- HIGHLANDS COLLEGE OF MONTANA TECH | [WWW.MTECH.EDU](http://WWW.MTECH.EDU/)
- LITTLE BIG HORN COLLEGE | [WWW.LBHC.EDU](http://WWW.LBHC.EDU/)
- MILES COMMUNITY COLLEGE | [WWW.MILESCC.EDU](http://WWW.MILESCC.EDU/)
- MISSOULA COLLEGE UM | [MC.UMT.EDU](http://MC.UMT.EDU/)
- MONTANA STATE UNIVERSITY | [WWW.MONTANA.EDU](http://WWW.MONTANA.EDU/)
- MONTANA STATE UNIVERSITY - NORTHERN | [WWW.MSUN.EDU](http://WWW.MSUN.EDU/)
- MONTANA STATE UNIVERSITY BILLINGS | [WWW.MSUBILLINGS.EDU](http://WWW.MSUBILLINGS.EDU/)
- MONTANA TECHNOLOGICAL UNIVERSITY OF UM | [WWW.MTECH.EDU](http://WWW.MTECH.EDU/)
- ROCKY MOUNTAIN COLLEGE | [WWW.ROCKY.EDU](http://WWW.ROCKY.EDU/)
- SALISH KOOTENAI COLLEGE | [WWW.SKC.EDU](http://WWW.SKC.EDU/)
- STONE CHILD COLLEGE | [WWW.STONECHILD.EDU](http://WWW.STONECHILD.EDU/)
- THE UNIVERSITY OF MONTANA WESTERN | [WWW.UMWESTERN.EDU](http://WWW.UMWESTERN.EDU/)
- UNIVERSITY OF MONTANA | [ADMISSIONS.UMT.EDU](http://ADMISSIONS.UMT.EDU/)
- UNIVERSITY OF PROVIDENCE | [WWW.UPROVIDENCE.EDU](http://WWW.UPROVIDENCE.EDU/)

### 2019 NUMBERS, CHARTS, & GRAPHS



9 - MONTANA 2 - YEAR COLLEGES

7 - MONTANA TRIBAL COLLEGES

6 - MONTANA 4 - YEAR PUBLIC UNIVERSITIES

3 - MONTANA PRIVATE COLLEGES & UNIVERSITIES



# MPSEOC *outline of* MAJOR PROGRAMS

# MPSEOC *honors* PARTNERSHIP

## MPSEOC MAJOR PROGRAMS

### FALL COLLEGE FAIRS

2019 WAS ANOTHER SUCCESSFUL YEAR OF STATEWIDE COLLABORATION AND SERVICE TO STUDENTS IN OFFERING 18 STATEWIDE FAIRS. IT WAS EXCITING TO BE CELEBRATING OUR 30TH YEAR OF OFFERING COLLEGE FAIRS IN MONTANA. THANK YOU TO ALL WHO HELPED MAKE THESE EVENTS POSSIBLE.

FOR MORE INFORMATION VISIT: [WWW.MPSEOC.ORG/FAIRS](http://WWW.MPSEOC.ORG/FAIRS)

### GUIDE BOOK

THE ONLINE GUIDE BOOK AND OUR MONTANACOLLEGES.COM WEBSITE REACH 1,000'S OF VISITORS FROM ALL OVER THE WORLD EACH YEAR.

FOR MORE INFORMATION VISIT: [WWW.MONTANACOLLEGES.COM/GUIDEBOOK](http://WWW.MONTANACOLLEGES.COM/GUIDEBOOK)

### SUMMER CONFERENCE

IN 2019 WE HOSTED THIS ANNUAL EVENT IN HELENA, MONTANA. THIS CONFERENCE OFFERED NATIONALLY RENOWNED SPEAKERS TO SHARE IN OUR MEMBERSHIP'S PROFESSIONAL DEVELOPMENT.

WE HOPE TO SEE YOU AGAIN IN THE FALL 2020!

FOR MORE INFORMATION VISIT: [WWW.MPSEOC.ORG/CONFERENCE](http://WWW.MPSEOC.ORG/CONFERENCE)

### COUNSELOR UPDATE

IN 2019, WE HOSTED THIS EVENT IN OCTOBER IN COLLABORATION WITH COLLEGE APPLICATION WEEK. WE HAD OVER 200 COUNSELORS, EDUCATORS, AND COLLEGES IN ATTENDANCE AT 9 DIFFERENT SITES ACROSS MONTANA. A VERY SPECIAL THANK YOU TO ALL OF YOU WHO HELPED MAKE THIS EVENT A SUCCESS.

FOR MORE INFORMATION VISIT: [WWW.MPSEOC.ORG/UPDATE](http://WWW.MPSEOC.ORG/UPDATE)

### MONTANA TRIBAL COLLEGE FAIRS

EACH YEAR THIS PROGRAM GROWS AND OFFERS AN AMAZING OPPORTUNITY FOR RELATIONSHIP BUILDING! 2019 HOSTED A RECORD NUMBER OF COLLEGES, UNIVERSITIES, AGENCIES, BUSINESSES, AND MORE! JOIN US THIS MARCH FOR THESE EVENTS!

FOR MORE INFORMATION VISIT: [WWW.MPSEOC.ORG/TRIBALCOLLEGEFAIRS](http://WWW.MPSEOC.ORG/TRIBALCOLLEGEFAIRS)

### CAMPUS COUNSELOR TRAINING

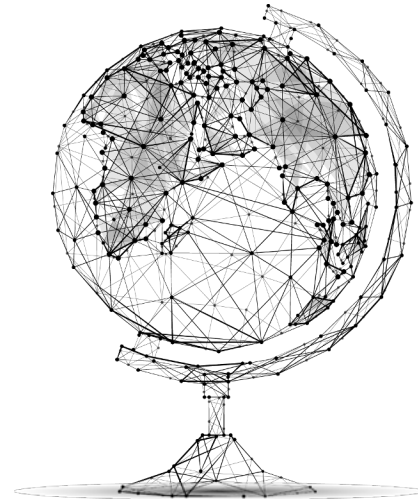
WE ARE IN OUR FOURTH YEAR OF OFFERING THIS PROGRAM. SEVERAL CAMPUSES HAVE HOSTED COUNSELOR TRAININGS WITH APPROVED OPI COUNSELOR CREDIT. CONTACT US WITH QUESTIONS!

FOR MORE INFORMATION VISIT: [WWW.MPSEOC.ORG/COUNSELORTRAINING](http://WWW.MPSEOC.ORG/COUNSELORTRAINING)

### MONTANA TRAVEL GUIDEBOOK

THE LAST FEW YEARS, MPSEOC CREATED THIS APP & RESOURCE FOR OUR MEMBERS AND TRAVELING REPRESENTATIVES TO HELP WITH NAVIGATING OUR BIG STATE. WITH HOTEL & RESTAURANT RECOMMENDATIONS AND ALSO MANY TRAVEL TIPS, THIS IS A HELPFUL TOOL TO USE WHILE YOU ARE ON THE ROAD. PLEASE SHARE WHAT YOU WOULD LIKE TO SEE IN THIS RESOURCE.

FOR MORE INFORMATION VISIT: [WWW.MONTANACOLLEGEFAIRS.COM/GUIDE](http://WWW.MONTANACOLLEGEFAIRS.COM/GUIDE)



## PARTNERSHIP & COLLABORATION

MPSEOC CONTINUES TO FORM NEW RELATIONSHIPS AS AN AVENUE TO GROW PARTNERSHIPS AND EXPAND OUR SERVICE, MISSION, AND REACH.

WE CONTINUED TO GROW AND INCREASE RELATIONSHIPS WITH OUR FELLOW ASSOCIATIONS: MACRAO, MASFAA, MSCA, ETC. EACH YEAR WE ATTEND SEVERAL OF THEIR CONFERENCES. WE ALSO CONTINUE TO WORK CLOSELY WITH THESE ASSOCIATIONS FOR THE COUNSELOR UPDATE, SUMMER CONFERENCE, COLLEGE FAIRS, COLLEGE APPLICATION WEEK, FINANCIAL AID EVENTS, ETC.

MPSEOC ALSO PRIDES ITSELF IN KEEPING CLOSE RELATIONS AND CONTACT WITH OUR MONTANA HIGH SCHOOLS. WE SPENT THE LAST YEAR VISITING SEVERAL HIGH SCHOOLS AND DOING PRESENTATIONS ABOUT COLLEGE PREPARATION. ALSO, MPSEOC HAS BEEN IN ATTENDANCE OF SEVERAL CAREER FAIRS & TRAININGS AROUND THE STATE AS REQUESTED.

MPSEOC SERVES AND IS A MEMBER ON THE MONTANA COLLEGE ACCESS NETWORK WHICH CONNECTS US DIRECTLY WITH THE MAJOR EDUCATION ENTITIES IN MONTANA.

## VISIT US ON THE WEB!

| RESOURCES FOR STUDENTS, COUNSELORS, PARENTS & BEYOND:  
[MONTANACOLLEGES.COM](http://MONTANACOLLEGES.COM) / [.ORG](http://.ORG) / [.NET](http://.NET)

| RESOURCES FOR OUR MEMBERSHIP:  
[MPSEOC.ORG](http://MPSEOC.ORG)

| RESOURCES FOR THE TRIBAL COLLEGE FAIRS & TEAM:  
[MONTANATRIBALCOLLEGES.ORG](http://MONTANATRIBALCOLLEGES.ORG)

| RESOURCES FOR FALL COLLEGE FAIRS:  
[MONTANACOLLEGEFAIRS.COM](http://MONTANACOLLEGEFAIRS.COM) |  
[SUPPORTMONTANASTUDENTS.ORG](http://SUPPORTMONTANASTUDENTS.ORG)

*thank you to our partners*

- ALL MONTANA HIGH SCHOOLS
- ALL MONTANA COLLEGES & UNIVERSITIES
- GEAR UP
- MONTANA UNIVERSITY SYSTEM - STUDENT FINANCIAL SERVICES
- OFFICE OF PUBLIC INSTRUCTION / OPI
- AMERICAN INDIAN COLLEGE FUND
- REACH HIGHER MONTANA
- MONTANA COLLEGE ACCESS NETWORK -MCAN
- MACRAO
- MASFAA
- MONTANA DEPARTMENT OF LABOR & INDUSTRY
- ACT
- THE COLLEGE BOARD | SAT
- MONTANA SCHOOL COUNSELORS ASSOCIATION
- PNACAC / NACAC
- JOB CORPS
- TALENT SEARCH / TRIO
- CAMPUS COMPACTS & VISTA
- MANY OUT-OF-STATE COLLEGES & UNIVERSITIES
- MANY STATE AGENCIES, BUSINESSES, & ORGANIZATIONS

**TOGETHER  
WE ARE ABLE  
TO HELP  
STUDENTS  
EVEN MORE!**





# TIMELINE *of* EVENTS

## JANUARY

- | UPDATE ONLINE PROFILE ON [MONTANACOLLEGES.COM](http://MONTANACOLLEGES.COM) WITH NEW YEAR CHANGES.
- | CHECK YOUR MEMBERSHIP DIRECTORY LISTING ON [MPSEOC.ORG](http://MPSEOC.ORG).
- | SHARE ANY FEEDBACK, IDEAS, GOALS YOU HAVE FOR THE NEW MPSEOC YEAR.

## FEBRUARY

- | SHARE ANY FEEDBACK YOU HAVE FOR THE UPCOMING BOARD MEETING.
- | FEBRUARY 12-13, 2020 | MPSEOC BOARD ANNUAL RETREAT

## MARCH

- | MARCH 30 - APRIL 2, 2020 & APRIL 6-7, 2020 | MONTANA TRIBAL COLLEGE FAIR CIRCUIT
- | LOOK FOR FALL COLLEGE FAIR INVITE
- | LOOK FOR GUIDE BOOK ADVERTISEMENT INVITE
- | SHARE ANY FEEDBACK YOU HAVE FOR THE UPCOMING BOARD MEETING.

## APRIL

- | MARCH 30 - APRIL 2, 2020 & APRIL 6-7, 2020 | MONTANA TRIBAL COLLEGE FAIR CIRCUIT
- | APRIL 2020 | MPSEOC BOARD MEETING
- | MPSEOC BOARD NOMINATIONS
- | MPSEOC MEMBERSHIP AWARD NOMINATIONS
- | SUMMER CONFERENCE - SHARE SPEAKER IDEAS / FEEDBACK
- | CHECK YOUR MEMBERSHIP DIRECTORY LISTING ON [MPSEOC.ORG](http://MPSEOC.ORG)

## MAY

- | LOOK FOR SUMMER CONFERENCE INVITATIONS
- | START WORKING ON CREATING YOUR GUIDE ADVERTISEMENT - IF YOU NEED HELP, WE ARE HAPPY TO HELP!
- | SHARE ANY FEEDBACK YOU HAVE FOR THE UPCOMING BOARD MEETING.
- | END OF MAY 2020 | BEGINNING OF JUNE - TBA - MPSEOC BOARD MEETING

## JUNE

- | START WORKING ON CREATING YOUR GUIDE ADVERTISEMENT - IF YOU NEED HELP, WE ARE HAPPY TO HELP!

## JULY

- | JULY 1, 2020 –DEADLINE - FALL COLLEGE FAIR TOUR REGISTRATION / PAYMENT
- | JULY 30, 2020–DEADLINE - SUBMIT YOUR GUIDE ADVERTISEMENT
- | JULY 30, 2020–UPDATE YOUR [MONTANACOLLEGES.COM](http://MONTANACOLLEGES.COM) PROFILE - ADD NEW PICTURES, VIDEOS, TUITION, QUESTIONS TO ASK YOU AT THE FAIR, WHICH FAIRS YOU WILL BE ATTENDING, ETC.
- | DEADLINE - SUMMER CONFERENCE REGISTRATION / PAYMENT

## AUGUST

- | AUGUST 2020 –SUMMER CONFERENCE - MONTANA
- | AUGUST 2020 | MPSEOC BOARD MEETING
- | AUGUST 2020–MEMBERSHIP ANNUAL LIVE MEETING
- | CHECK YOUR MEMBERSHIP DIRECTORY LISTING ON [MPSEOC.ORG](http://MPSEOC.ORG)

## SEPTEMBER

- | SEPTEMBER 14–17, 2020 | EASTERN REGION - MONTANA COLLEGE FAIR TOUR
- | SEPTEMBER 21–24, 2020 | CENTRAL REGION - MONTANA COLLEGE FAIR TOUR
- | SEPTEMBER 28 - OCTOBER 1, 2020 | WESTERN REGION - MONTANA COLLEGE FAIR TOUR
- | SEPTEMBER CELEBRATION OF MONTANA STUDENTS! [WWW.SUPPORTMONTANASTUDENTS.ORG](http://WWW.SUPPORTMONTANASTUDENTS.ORG)

## OCTOBER

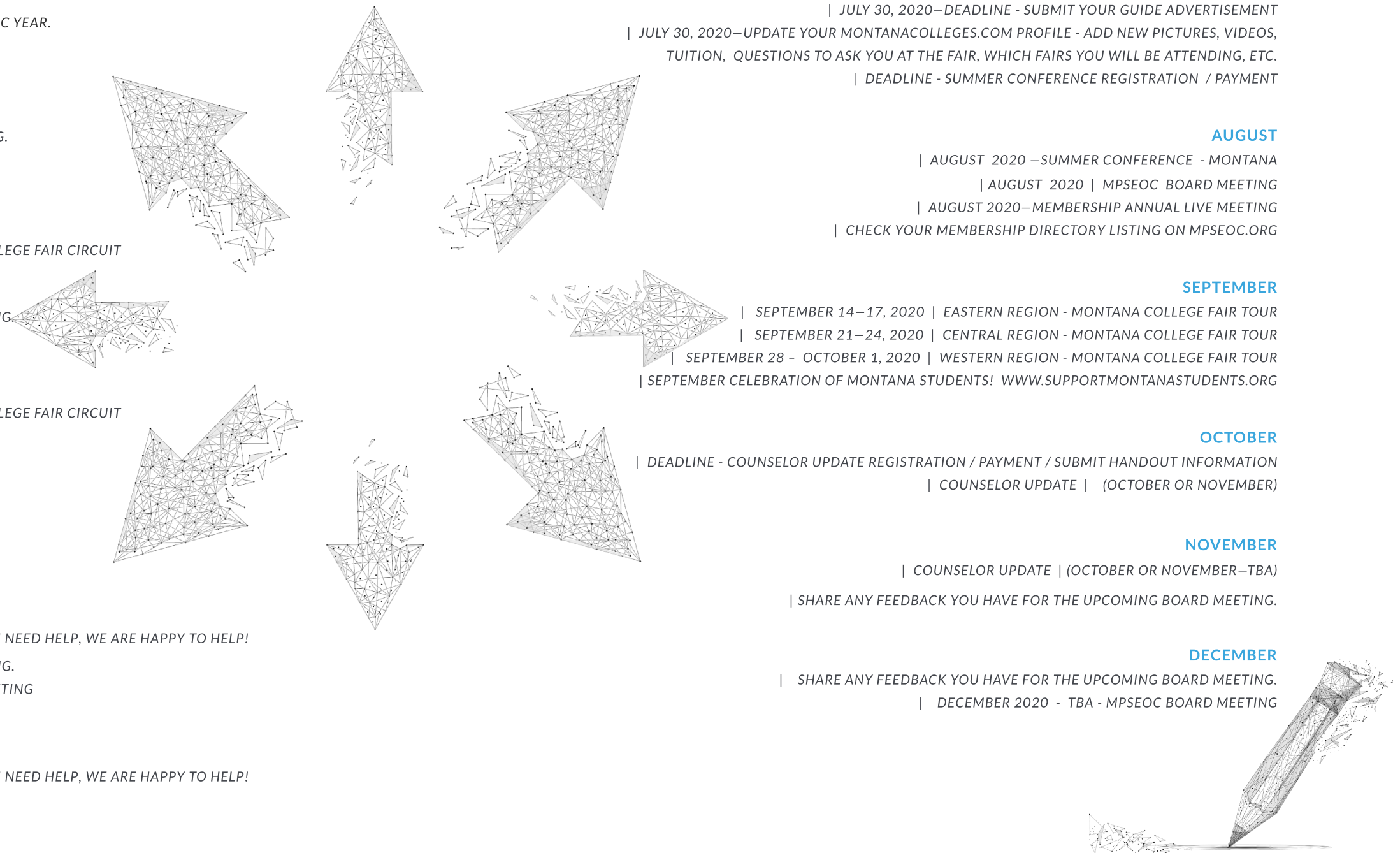
- | DEADLINE - COUNSELOR UPDATE REGISTRATION / PAYMENT / SUBMIT HANDOUT INFORMATION
- | COUNSELOR UPDATE | (OCTOBER OR NOVEMBER)

## NOVEMBER

- | COUNSELOR UPDATE | (OCTOBER OR NOVEMBER–TBA)
- | SHARE ANY FEEDBACK YOU HAVE FOR THE UPCOMING BOARD MEETING.

## DECEMBER

- | SHARE ANY FEEDBACK YOU HAVE FOR THE UPCOMING BOARD MEETING.
- | DECEMBER 2020 - TBA - MPSEOC BOARD MEETING







*a very special thank you  
to our*

**BOARD  
of  
DIRECTORS**



**MEET OUR BOARD OF DIRECTORS**

CONTACT US

WE ARE HERE TO HELP!

**AUSTIN MAPSTON, PAST PRESIDENT**

DEAN OF ENROLLMENT SERVICES  
ROCKY MOUNTAIN COLLEGE  
BILLINGS, MT  
PHONE: (406) 657-1024  
EMAIL: MAPSTONA@ROCKY.EDU

**MIKE OUERT, PRESIDENT**

ASSISTANT DIRECTOR OF RECRUITMENT  
MONTANA STATE UNIVERSITY  
BOZEMAN, MT  
PHONE: (406) 994-5411  
EMAIL: MROUERT@MONTANA.EDU

**MEET OUR  
EXECUTIVE DIRECTOR**

AMY LEARY  
AMY.LEARY@MONTANACOLLEGES.COM  
406.531.3531

**SUELA CELA, DIRECTOR**

ASSISTANT VICE PRESIDENT OF INSTITUTIONAL  
RESEARCH & ACCREDITATION / DIRECTOR OF  
ENROLLMENT  
DAWSON COMMUNITY COLLEGE  
GLENDALE, MT 59330  
PHONE: (406) 377-9403  
EMAIL: SCELA@DAWSON.EDU

**JOEY DITONNO, DIRECTOR**

STUDENT SERVICES  
CHIEF DULL KNIFE COLLEGE  
LAME DEER, MT  
PHONE: (406) 477-6215  
EMAIL: JDITONNO@CDKC.EDU

**EMILY FERGUSON-STEGER, DIRECTOR**

DIRECTOR OF ADMISSIONS  
UNIVERSITY OF MONTANA  
MISSOULA, MT  
PHONE: (406) 243-6268  
EMAIL: EMILY.STEGER@MSO.UMT.EDU

**DENISE OSTBERG, DIRECTOR**

EXECUTIVE ASSISTANT AND EVENT  
COORDINATOR OF DEVELOPMENT,  
MARKETING & COMMUNICATIONS  
UNIVERSITY OF PROVIDENCE  
GREAT FALLS, MT  
PHONE: (406) 791-5202  
EMAIL: DENISE.OSTBERG@UPROVIDENCE.EDU

**LAURIE RODRIGUEZ, DIRECTOR**

INTERIM DIRECTOR OF ADMISSION  
CARROLL COLLEGE  
HELENA, MT  
PHONE: (406) 447-5483  
EMAIL: LRODRIGUEZ@CARROLL.EDU

**CHRISSEY STOKES, DIRECTOR**

ADMISSIONS REPRESENTATIVE  
THE UNIVERSITY OF MONTANA WESTERN  
DILLON, MONTANA 59725  
PHONE: (406) 683-7453  
EMAIL: CHRISTINA.STOKES@UMWESTERN.EDU

**SHARE YOUR  
FEEDBACK / IDEAS WITH US!**

YOUR IDEAS, COMMENTS, FEEDBACK ARE INVALUABLE TO THE SUCCESS OF MPSEOC.  
AS OUR MEMBERSHIP, THE BOARD AND DIRECTOR APPRECIATE YOUR IDEAS MORE THAN YOU  
KNOW. THANK YOU FOR SHARING AND HELPING US MAKE MPSEOC BE THE BEST IT CAN BE.





# MPSEOC INSTITUTION REPRESENTATIVES

*a very special thank you*

## MEET OUR INSTITUTION REPRESENTATIVES

CONTACT US

WE ARE HERE TO HELP!

AANIIH NAKODA COLLEGE | BOB PARSLEY

BLACKFEET COMMUNITY COLLEGE | ALI SMITH

CARROLL COLLEGE | LAURIE RODRIGUEZ

CHIEF DULL KNIFE COLLEGE | ZANE SPANG & JOEY DITONNO

CITY COLLEGE MSU BILLINGS | STEPHANIE COWEN

DAWSON COMMUNITY COLLEGE | SUELA CELA

FLATHEAD VALLEY COMMUNITY COLLEGE | MORGAN RAY

FORT PECK COMMUNITY COLLEGE | CARLY HOSFORD-ISRAEL

GALLATIN COLLEGE MSU | NICOLE BERG

GREAT FALLS COLLEGE MSU | DENISE OSTBERG

HELENA COLLEGE UM | SARAH DELLWO

HIGHLANDS COLLEGE OF MONTANA TECH | STEPHANIE CROWE

LITTLE BIGHORN COLLEGE | ALDA GOODLUCK

MILES COMMUNITY COLLEGE | ERIN NIEDGE

MISSOULA COLLEGE UM | SHERIDAN COOK

MONTANA STATE UNIVERSITY | MIKE OUERT

MONTANA STATE UNIVERSITY BILLINGS | KRISTIN PETERMAN

MONTANA STATE UNIVERSITY NORTHERN | MAURA GATCH

MONTANA TECH | STEPHANIE CROWE

ROCKY MOUNTAIN COLLEGE | AUSTIN MAPSTON

SALISH KOOTENAI COLLEGE | TRACI MCDONALD

STONE CHILD COLLEGE | MARQUIETA JILOT & JOLIN SUNCHILD

UNIVERSITY OF MONTANA | EMILY FERGUSON-STEGER

UNIVERSITY OF MONTANA WESTERN | CHRISSEY STOKES

UNIVERSITY OF PROVIDENCE | MELANIE HOUGE

SEE A DETAILED LISTING OF ALL OUR MEMBER REPRESENTATIVES AT

[WWW.MPSEOC.ORG](http://WWW.MPSEOC.ORG)





## THANK YOU TO ALL WHO PARTNERED WITH MPSEOC TO HELP STUDENTS & EDUCATION TOGETHER IN 2019

1,000'S OF STUDENTS, COUNSELORS, PARENTS, AND BEYOND! | A.T. STILL UNIVERSITY | AANIIH NAKODA COLLEGE | ABSAROKEE HIGH SCHOOL | ACADEMY OF INTERACTIVE ENTERTAINMENT | ACE / NATIONAL COUNCIL | ACT | ALBERTON HIGH SCHOOL | AMERICAN INDIAN COLLEGE FUND | ANACONDA HIGH SCHOOL | ARLEE HIGH SCHOOL | AUGUSTA HIGH SCHOOL | BAINVILLE HIGH SCHOOL | BAKER HIGH SCHOOL | BEARTOOTH MOUNTAIN CHRISTIAN MINISTRIES | BEAVERHEAD CO. HIGH SCHOOL | BELFRY HIGH SCHOOL | BELGRADE HIGH SCHOOL | BELT VALLEY HIGH SCHOOL | BIG FLAT ELECTRIC COOPERATIVE | BIG SANDY HIGH SCHOOL | BIG SKY HIGH SCHOOL | BIGFORK HIGH SCHOOL | BILLINGS CAREER CENTER / HIGH SCHOOL | BILLINGS CENTRAL CATHOLIC HIGH SCHOOL | BILLINGS CHRISTIAN SCHOOL | BILLINGS CLINIC | BILLINGS SENIOR HIGH SCHOOL | BILLINGS SKYVIEW HIGH SCHOOL | BILLINGS WEST HIGH SCHOOL | BLACK HILLS STATE UNIVERSITY | BLACKFEET COMMUNITY COLLEGE | BOISE STATE UNIVERSITY | BOX ELDER HIGH SCHOOL | BOZEMAN HIGH SCHOOL | BRIDGER HIGH SCHOOL | BROADVIEW HIGH SCHOOL | BROADWATER HIGH SCHOOL | BROCKTON HIGH SCHOOL | BROWNING HIGH SCHOOL | BUREAU OF LAND MANAGEMENT | BUREAU OF LAND MANAGEMENT | BUTTE CENTRAL CATHOLIC HIGH SCHOOL | BUTTE HIGH SCHOOL | C.M. RUSSELL HIGH SCHOOL | CAMPUS COMPACT / AMERICORPS | CARROLL COLLEGE | CARROLL COLLEGE | CARTER COUNTY HIGH SCHOOL | CASCADE HIGH SCHOOL | CENTERVILLE HIGH SCHOOL | CENTRAL ALTERNATIVE HIGH SCHOOL | CHADRON STATE COLLEGE | CHARLO HIGH SCHOOL | CHESTER-JOPLIN-IVERNESS HIGH SCHOOL | CHIEF DULL KNIFE COLLEGE | CHINOOK HIGH SCHOOL | CHOTEAU HIGH SCHOOL | CIRCLE HIGH SCHOOL | CITY COLLEGE - MSUB | CITY COLLEGE MSU BILLINGS | CITY COLLEGE OF MSU BILLINGS | COLLEGE APPLICATION WEEK | COLLEGE OF SOUTHERN IDAHO | COLSTRIP HIGH SCHOOL | COLUMBIA FALLS HIGH SCHOOL | COLUMBUS HIGH SCHOOL | CONRAD HIGH SCHOOL | CORVALLIS HIGH SCHOOL | CULBERTSON HIGH SCHOOL | CUSTER COUNTY DISTRICT HIGH SCHOOL | CUSTER HIGH SCHOOL | CUT BANK HIGH SCHOOL | DAKOTA COLLEGE AT BOTTINEAU | DARBY HIGH SCHOOL | DAWSON COMMUNITY COLLEGE | DAWSON COUNTY HIGH SCHOOL | DENTON HIGH SCHOOL | DEPARTMENT OF CORRECTIONS - STATE OF MONTANA | DEPARTMENT OF PUBLIC HEALTH AND HUMAN SERVICES | DICKINSON STATE UNIVERSITY | DODSON HIGH SCHOOL | DRUMMOND HIGH SCHOOL | DUAL CREDIT | DUTTON/BRADY HIGH SCHOOL | EASTERN OREGON UNIVERSITY | EASTERN WASHINGTON UNIVERSITY | EASTERN WYOMING COLLEGE | EDMONDS COMMUNITY COLLEGE | EDUCATIONAL TALENT SEARCH, OFFICE OF THE COMMISSIONER OF HIGHER EDUCATION | ENNIS HIGH SCHOOL | EVANS HAIRSTYLING COLLEGE | FAIRFIELD HIGH SCHOOL | FAIRVIEW HIGH SCHOOL | FERGUS HIGH SCHOOL | FLATHEAD HIGH SCHOOL | FLATHEAD VALLEY COMMUNITY COLLEGE | FLORENCE-CARLTON HIGH SCHOOL | FOOTHILLS COMMUNITY CHRISTIAN SCHOOL | FORSYTH HIGH SCHOOL | FORT BENTON HIGH SCHOOL | FORT PECK COMMUNITY COLLEGE | FRAZER HIGH SCHOOL | FRENCHTOWN HIGH SCHOOL | FROID HIGH SCHOOL | FROMBERG HIGH SCHOOL | GALLATIN COLLEGE | GARDINER HIGH SCHOOL | GARFIELD COUNTY DISTRICT HIGH SCHOOL | GEAR UP | GERALDINE HIGH SCHOOL | GEYSER HIGH SCHOOL | GILLETTE COLLEGE | GLACIER HIGH SCHOOL | GLASGOW SENIOR HIGH SCHOOL | GRAND CANYON UNIVERSITY | GRANITE COUNTY HIGH SCHOOL | GRASS RANGE HIGH SCHOOL | GREAT FALLS CENTRAL CATHOLIC HIGH SCHOOL | GREAT FALLS COLLEGE MONTANA STATE UNIVERSITY | GREAT FALLS COLLEGE MSU | GREAT FALLS HIGH SCHOOL | HAMILTON HIGH SCHOOL | HARDIN HIGH SCHOOL | HARLEM HIGH SCHOOL | HARLOWTON HIGH SCHOOL | HARRISON HIGH SCHOOL | HAVRE HIGH SCHOOL | HAYS-LODGE POLE HIGH SCHOOL | HEALTHCARE MONTANA | HEART BUTTE HIGH SCHOOL | HELENA CAPITAL HIGH SCHOOL | HELENA CHRISTIAN SCHOOL | HELENA COLLEGE | HELENA COLLEGE UNIVERSITY OF MONTANA | HELENA HIGH SCHOOL | HELLGATE HIGH SCHOOL | HERITAGE BAPTIST SCHOOL | HIGHLANDS COLLEGE | HIGHWOOD HIGH SCHOOL | HINSDALE HIGH SCHOOL | HOBSON HIGH SCHOOL | HOT SPRINGS HIGH SCHOOL | HUNTLEY PROJECT HIGH SCHOOL | HYSHAM HIGH SCHOOL | INDEPENDENCE BANK | JEFFERSON COUNTY HIGH SCHOOL | JOLIET HIGH SCHOOL | JUDITH GAP HIGH SCHOOL | LAMBERT HIGH SCHOOL | LAME DEER HIGH SCHOOL | LARAMIE COUNTY COMMUNITY COLLEGE | LAUREL HIGH SCHOOL | LAVINA HIGH SCHOOL | LEWIS AND CLARK LAW SCHOOL | LEWIS-CLARK STATE COLLEGE | LIBBY HIGH SCHOOL | LIMA HIGH SCHOOL | LINCOLN COLLEGE OF TECHNOLOGY | LINCOLN COUNTY HIGH SCHOOL | LINCOLN HIGH SCHOOL | LINDERMAN EDUCATION CENTER | LINFIELD COLLEGE | LITTLE BIG HORN COLLEGE | LODGE GRASS HIGH SCHOOL | LONE PEAK HIGH SCHOOL | LOYOLA SACRED HEART HIGH SCHOOL | LUSTRE CHRISTIAN HIGH SCHOOL | MACRAO | MALTA HIGH SCHOOL | MANHATTAN CHRISTIAN SCHOOL | MANHATTAN HIGH SCHOOL | MASFAA | MEDICINE LAKE HIGH SCHOOL | MELSTONE HIGH SCHOOL | MILES COMMUNITY COLLEGE | MINOT STATE UNIVERSITY | MISSOULA COLLEGE UM | MONTANA ACADEMY / HIGH SCHOOL | MONTANA ACADEMY OF SALONS | MONTANA AHEC | MONTANA AHEC/HEALTHCARE MT | MONTANA AIR NATIONAL GUARD | MONTANA ARMY NATIONAL GUARD | MONTANA BIBLE COLLEGE | MONTANA COLLEGE ACCESS NETWORK | MONTANA CONSERVATION CORPS | MONTANA DEPARTMENT OF LABOR & INDUSTRY | MONTANA DEPARTMENT OF TRANSPORTATION | MONTANA DPHHS PRIMARY CARE OFFICE | MONTANA HIGHWAY PATROL | MONTANA OFFICE OF PUBLIC INSTRUCTION | MONTANA OFFICE OF PUBLIC INSTRUCTION (MEASUREMENT AND ACCOUNTABILITY) | MONTANA REGISTERED APPRENTICESHIP PROGRAM & JOB SERVICE | MONTANA SCHOOL COUNSELORS ASSOCIATION | MONTANA SCHOOL FOR THE DEAF AND BLIND / HIGH SCHOOL | MONTANA STATE UNIVERSITY | MONTANA STATE UNIVERSITY BILLINGS | MONTANA STATE UNIVERSITY NORTHERN | MONTANA STATE UNIVERSITY-NORTHERN | MONTANA TECH | MONTANA TECH TRIO | MONTANA TECHNOLOGICAL UNIVERSITY | MONTANA UNIVERSITY SYSTEM | MONTANA UNIVERSITY SYSTEM - STUDENT FINANCIAL SERVICES | MONTANA YOUTH CHALLENGE ACADEMY | MOORE HIGH SCHOOL | MPSEOC | MONTANA COLLEGES | MTC - JOB CORPS | NAME OF INSTITUTION | NASHUA HIGH SCHOOL | NATURAL RESOURCES CONSERVATION SERVICE | NATURAL RESOURCES CONSERVATION SERVICE- USDA | NORTH DAKOTA STATE UNIVERSITY | NORTH STAR HIGH SCHOOL | NORTH TOOLE COUNTY HIGH SCHOOL | NORTHERN ARIZONA UNIVERSITY | NORTHERN CHEYENNE TRIBAL SCHOOL | NORTHWEST COLLEGE | NOXON HIGH SCHOOL | OLDS COLLEGE | OPHEIM HIGH SCHOOL | OREGON COAST CULINARY INSTITUTE | PARIS GIBSON EDUCATION CENTER | PARK CITY HIGH SCHOOL | PARK HIGH SCHOOL | PERRY TECHNICAL INSTITUTE | PINE HILLS YOUTH CORRECTIONAL FACILITY / HIGH SCHOOL | PLAINS HIGH SCHOOL | PLANNED PARENTHOOD OF MONTANA | PLENTY COUPS HIGH SCHOOL | PLENTYWOOD HIGH SCHOOL | PLEVNA HIGH SCHOOL | PNACAC | POLSON HIGH SCHOOL | POPLAR HIGH SCHOOL | POWDER RIVER COUNTY DISTRICT HIGH SCHOOL (PRCDHS) | POWELL COUNTY HIGH SCHOOL | POWER HIGH SCHOOL | PROJECT FOR ALTERNATIVE LEARNING | RAPELJE HIGH SCHOOL | REACH HIGHER MONTANA | RED LODGE HIGH SCHOOL | REED POINT HIGH SCHOOL | REO RURAL EMPLOYMENT OPPORTUNITIES | RICHEY HIGH SCHOOL | ROBERTS HIGH SCHOOL | ROCKY BOY HIGH SCHOOL | ROCKY MOUNTAIN COLLEGE | ROCKY MOUNTAIN SCHOOL OF PHOTOGRAPHY | RONAN HIGH SCHOOL | ROSEBUD HIGH SCHOOL | ROUNDUP HIGH SCHOOL | ROY HIGH SCHOOL | RYEGATE HIGH SCHOOL | SACO HIGH SCHOOL | SALISH KOOTENAI COLLEGE | SAVAGE HIGH SCHOOL | SAVANNAH COLLEGE OF ART AND DESIGN | SCOBAY HIGH SCHOOL | SEELEY-SWAN HIGH SCHOOL | SENTINEL HIGH SCHOOL | SHELBY HIGH SCHOOL | SHEPHERD HIGH SCHOOL | SHERIDAN COLLEGE | SHERIDAN HIGH SCHOOL | SHIELDS VALLEY HIGH SCHOOL | SIDNEY HIGH SCHOOL | SIMMS HIGH SCHOOL | ST. ANDREW SCHOOL | ST. IGNATIUS HIGH SCHOOL | ST. LABRE HIGH SCHOOL | ST. REGIS HIGH SCHOOL | STANFORD HIGH SCHOOL | STEVENSVILLE HIGH SCHOOL | STILLWATER CHRISTIAN HIGH SCHOOL | STONE CHILD COLLEGE | SUMMIT PREPARATORY SCHOOL | SUPERIOR HIGH SCHOOL | SWEET GRASS COUNTY HIGH SCHOOL | TALENT SEARCH | TERRY HIGH SCHOOL | THE COLLEGE BOARD | THE SAVANNAH COLLEGE OF ART AND DESIGN | THOMPSON FALLS HIGH SCHOOL | THREE FORKS HIGH SCHOOL | TREASURE VALLEY COMMUNITY COLLEGE | TRIO | TROY HIGH SCHOOL | TURNER HIGH SCHOOL | TWIN BRIDGES HIGH SCHOOL | TWO EAGLE RIVER HIGH SCHOOL | U.S. DEPARTMENT OF STATE | UNIVERSITY OF MARY | UNIVERSITY OF MARY | UNIVERSITY OF MONTANA | UNIVERSITY OF MONTANA WESTERN | UNIVERSITY OF MONTANA WESTERN | UNIVERSITY OF NORTH DAKOTA | UNIVERSITY OF OREGON | UNIVERSITY OF PROVIDENCE | UNIVERSITY OF PUGET SOUND | UNIVERSITY OF WASHINGTON | UNIVERSITY OF WYOMING | US CUSTOMS AND BORDER PROTECTION | US. AIR FORCE | USDA ARS NORTHERN PLAINS AGRICULTURAL RESEARCH LAB | USDA-NRCS MT | VALIER HIGH SCHOOL | VALLEY CHRISTIAN SCHOOL | VICTOR HIGH SCHOOL | WALLA WALLA UNIVERSITY | WALLA WALLA UNIVERSITY - BILLINGS PROGRAM | WEST YELLOWSTONE HIGH SCHOOL | WESTBY HIGH SCHOOL | WESTERN DAKOTA TECH | WHITE SULPHUR SPRINGS HIGH SCHOOL | WHITEFISH HIGH SCHOOL | WHITEFISH INDEPENDENT | WHITEHALL HIGH SCHOOL | WHITEWATER HIGH SCHOOL | WHITMAN COLLEGE | WIBAUX HIGH SCHOOL | WILLAMETTE UNIVERSITY | WILLARD ALTERNATIVE HIGH SCHOOL | WILLISTON STATE COLLEGE | WILLOW CREEK HIGH SCHOOL | WINIFRED HIGH SCHOOL | WINNETT HIGH SCHOOL | WOLF POINT HIGH SCHOOL | WYOTECH | YELLOWSTONE ACADEMY / HIGH SCHOOL

### MPSEOC | MONTANA COLLEGES

MONTANA POST SECONDARY EDUCATIONAL OPPORTUNITIES COUNCIL

PO BOX 7548 | MISSOULA | MONTANA | 59807

[www.MONTANACOLLEGES.com](http://www.MONTANACOLLEGES.com) | [www.MPSEOC.org](http://www.MPSEOC.org)

